



Amrun project

Expression of interest

Process Facility

Package Number: 25977-000-HC3-M000-00012

Package Title: Process Facility

General Description

Rio Tinto's Amrun project is located approximately 40 km south-west of Weipa in Far North Queensland, Australia.

This package requires the off-site assembly and on-site installation of modular assemblies within the Process Facilities. The scope requires the tenderer to have relevant structural, concrete, mechanical, piping, electrical and instrumentation experience.

Work Included

The package will be issued for bid as one package with the following separable parts.

- Part A: Off-site Assembly of modules including, but not limited to:
 - o Modularised bauxite beneficiation plant (including concrete foundations)
 - Modules are nominally 15m(W) x 25m(L) x 20m(H) and up to 1,200 metric tonnes
 - o Primary and secondary sizer structures
 - o Tertiary crushing structure
 - o Transfer stations
 - o Conveyor galleries
 - o Conveyor ground modules

The expectation is that the Tenderer will utilise to the maximum extent possible, modularised structures to reduce manning levels required on-site.

- Part B: Installation of the modules on Site
 - o Supply of all labour, tools, supervision, quality assurance, temporary storage and workshop facilities, construction plant and equipment, materials, services, ancillary equipment, utilities, consumables and perform all installation and testing necessary.

Conceptual Drawings

Figure 1 – Overview of beneficiation plant

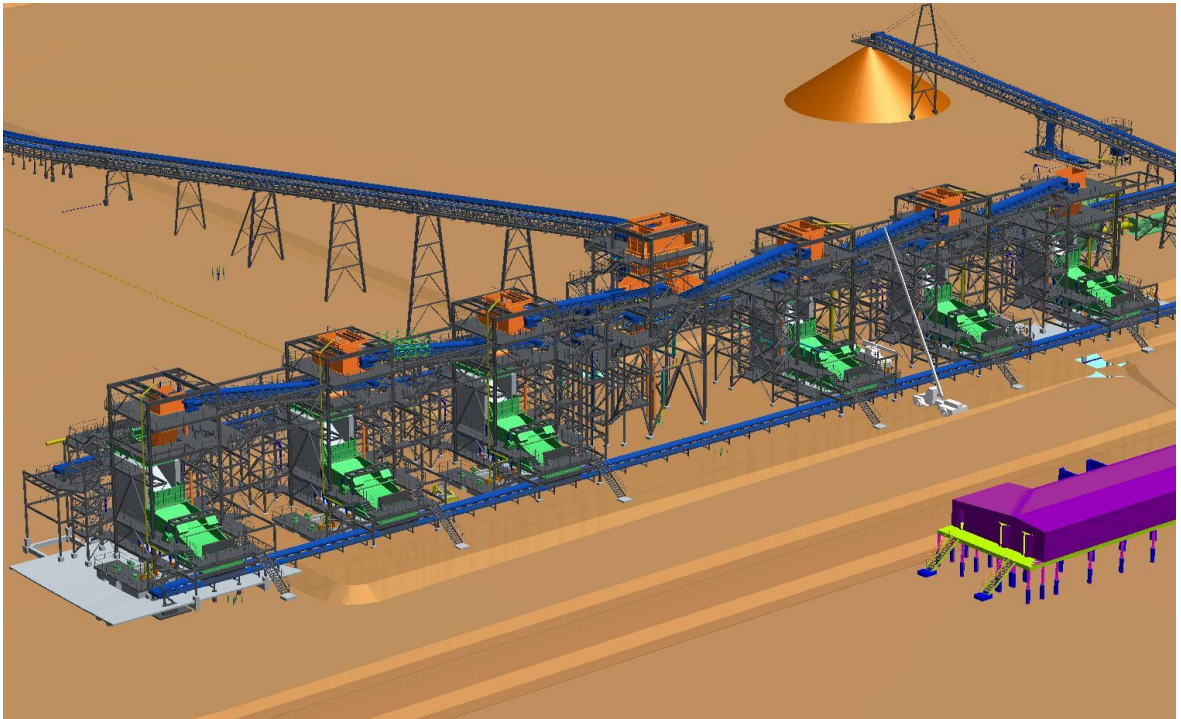
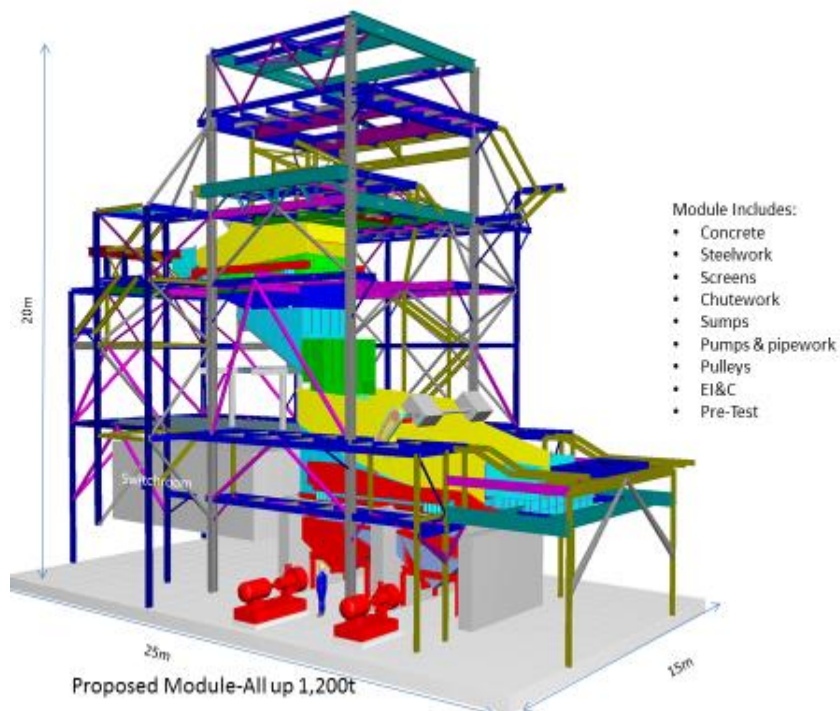


Figure 2 – Typical beneficiation plant module



Capability and Capacity

Expressions of interest should address the following criteria:

1. Relevant experience with Rio Tinto occurred in the past 5 years
2. Relevant experience in the relevant disciplines (structural, concrete, mechanical, piping, electrical and instrumentation)
3. Relevant experience of executing similar works in Australia
4. Describe experience in and type and sizes of modules preassembled (if any)
5. Describe experience with installing modules (including where concrete foundations are part of the module)
6. Describe current preassembly yard and location where module construction would be executed
7. Describe the proximity to suitable Roll On, Roll Off (RORO) facilities for barge loading
8. Describe preferred location for preassembly yard for module construction
9. Describe willingness to establish a suitable preassembly yard if none owned (and potential sites)

Forecast Award Date: 3Q, 2016

Instructions to Tenderers

If your business possesses the capability and capacity to perform the stated scope of work, please submit a registration of interest via the ICN Gateway at www.amrun.icn.org.au.

Please ensure that:

- Your company profile on ICN Gateway is complete, up-to-date and accurate
- You register your interest as a Full Scope or Partial Scope supplier (where applicable), and
- You respond to all project-specific questions via the ICN Gateway.

More Information

Please contact the Industry Capability Network Queensland on +61 (7) 3364 0676 should you have any enquiries regarding this scope of work.

The Rio Tinto Board approved the development of the Amrun project (previously known as South of Embley) on 27 November 2015.

More information about the Amrun Project can be found on the Rio Tinto website www.riotinto.com.

Disclaimer

Scope of Work is indicative only and is intended to be used as a summary description of work which may be required by Rio Tinto and may be subject to change. Full scopes of work will be made available to parties that are invited to tender. There is no undertaking to contract or proceed to a competitive process implied by this form. Further contact with interested suppliers will be at Rio Tinto's discretion.