

Ref: 0000

Attn: to whom it may concern

Dear Interested Party,

REQUEST FOR INFORMATION (RFI): SUPPLY OF APPRENTICESHIP TRAINING SUPPORT PROGRAMS

OZ Minerals Carrapateena Pty Ltd is pleased to invite your organisation to submit information around the supply of apprenticeship training programs.

1. CARRAPATEENA PROJECT OVERVIEW

Carrapateena is a copper-gold deposit located in South Australia's Gawler Craton approximately 160 km North of Port Augusta. The Carrapateena Tenements were purchased by OZ Minerals in 2011 and we have been progressively developing the mine, processing plant and supporting infrastructure since 2016.

As Carrapateena has now entered its operational phase, with the fixed plant in place, we are seeking to work with one apprenticeship training support provider to support future Carrapateena apprentices.

2. LOCATION

Carrapateena site is located in South Australia, north of the regional centre of Port Augusta, and South-East of both the BHP Billiton Olympic Dam Site and the OZ Minerals copper-gold mine at Prominent Hill (as shown in Figure 1). Carrapateena site is located outside the Woomera Prohibited Area and is therefore not subject to any access or ownership conditions.

Carrapateena is currently accessed via a turn-off from the Stuart Highway located 75 km from Port Augusta. The access road is graded and unsealed, and runs 90 km from the Stuart Highway turn-off to site.

A new site access road is proposed running ~50 km south-west from the site to the Stuart Highway, parallel to the new high voltage transmission line connection to the state electricity network near Mt Gunson.

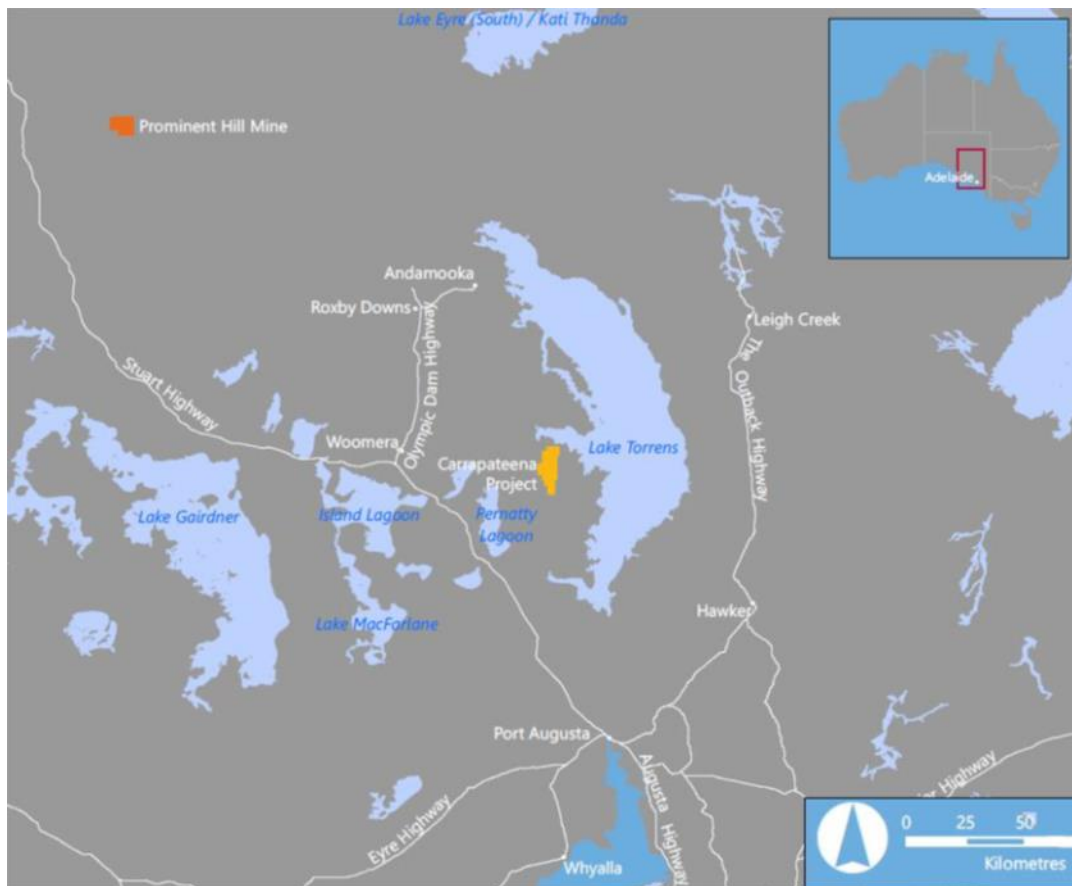


Figure 1 – Carrapateena Location

3. REQUIREMENTS FOR FORMATION AND PRICING SUBMISSION

Oz Minerals is looking to place four (4) apprentices in 2020 and intake an additional four (4) apprentices year on year thereafter. At this stage only Electrical and Mechanical Fitting apprenticeship placements will be provided.

We are hoping to take on our 2020 intake as soon as practicable. The apprentices will work a FIFO 4 days on 3 days off OR 8 days on 6 days off roster. Hours of work are negotiable but please assume 12hr work days.

Recruitment of the apprentices and associated testing will be completed by Oz Minerals and thus is excluded from scope.

The following information is provided to assist with your pricing submission:

- a) Summary of experience and services for supporting Carrapateena in a remote location within the Upper Spencer Gulf and Far North of South Australia
- b) Summary of experience and services for supporting local level, apprenticeship program development and alignment with Government requirements
- c) Summary of experience working with Aboriginal communities
- d) Summary of cost structure for your service setting out all fees, rates and other costs inclusive of apprentice remuneration

- e) An example training plan for: a) mechanical fitter apprentice; and b) electrical apprentice (both Cert 3)
- f) A summary of apprentice mentoring, support and wellbeing capability and/or programs
- g) A summary of historical completion rates of your apprentices
- h) A summary of group training capability should some modular work not be available for completion at the Carrapateena mine site
- i) A summary of feedback, touch points and interaction with Carrapateena maintenance team supervisors and the Carrapateena HR Team
- j) A summary of flexibility of training delivery capacity to suit a mining operation
- k) If you are not a training provider for Mechanical Fitting and Electrical Apprenticeships, please provide a summary of what training provider you will use.

4. DUE DATE & FURTHER INFORMATION

Please submit your submission by COB 7 February 2020.

Any questions regarding this Request for Pricing must be directed in writing to Donna Newman
Donna.newman@ozminerals.com and cc: nicole.wood@ozminerals.com

Next Steps: Feedback will be provided within 2 weeks of the closure date.