

Expression of Interest: Wholeship Eyeplates

Hunter Class Frigate Program

Including:

HCFP – Wholeship Eyeplates

Capability SOW & Questionnaire

Acronyms and Definitions

BAE	BAE Systems Australia Limited
EOI	Expressions Of Interest
HCFP	Hunter Class Frigate Program
RAN	Royal Australian Navy
GCS-A	Global Combat Ship-Australia
T26	British Type 26 Global Combat Ship
RAP	Reconciliation Action Plan
AUD	Australian Dollars
LR	Lloyd's Register
NSR	Naval Ship Rules
TES	Technical Equipment Specification

Including Capability SOW / Questionnaire



Table of Contents

1.	SCOPE.....	4
2.	ANNEX A:.....	6
3.	PRE-QUALIFICATION QUESTIONNAIRE.....	10

1. SCOPE

BAE Systems are seeking Expressions of Interest (EOI) to supply ships with wholeship eyeplates for the Hunter Class Frigate Program (HCFP).

BAE has recently been down selected to design and build the Royal Australian Navy's (RAN) future frigates.

The BAE Systems Future Frigate offering, also known as the Hunter Class GCS-A (Global Combat Ship – Australia) is a variant of the British Type 26 GCS (T26).

The Hunter Class Frigates will be built at the ASC Shipbuilding Facility at Osborne, Adelaide, SA.

The purpose of the Capability Questionnaire is to establish the feasibility of prospective industrial partners to provide wholeship eyeplates to BAE Systems for the HCFP.

The Hunter Class Program will require maximisation of local content in Australia.

Suppliers will be required to supply Wholeship Eyeplates with the below specifications:

- Eyeplates are used throughout the ship to facilitate lifting and fleetting of equipment. Eyeplate capability depends upon the equipment to be lifted and/or fleetted.
- Eyeplates are welded to the ship's structure by The Platform Builder who will carry out the welds between the Eyeplates and ship's structure. The supplier must ensure that the forgings are of such quality as to achieve satisfactory welds.
- It is initially estimated that each GCS-A vessel shall require the following stock levels of Eyeplates;

Eyeplate Designation	Number off	SWL (All Round)	Type
YSL-01	1500	1 Tonne	Butted
YSL-02	800	1 Tonne	Overlapped
YSL-03	50	3 Tonne	Overlapped
YSL-03	50	3 Tonne	Butted
YSL-04	50	2 Tonne	Overlapped
YSL-04	50	2 Tonne	Butted

- The responders to this EoI should be aware that the requirement will be to include allowances for gaining LRS approval of material, procedures and testing, and providing the relevant documentary proof to the purchaser in the form of certificates. Any procedures necessary are the responsibility of the supplier. All contact between supplier and LRS will be the responsibility of the supplier.
- The required geometry of the Eyeplates is shown in sketches DSD/122, DSD/123, DSD/125 and DSD/203 in Annex A.
- Machining, Tolerances and Finish

Including Capability SOW / Questionnaire

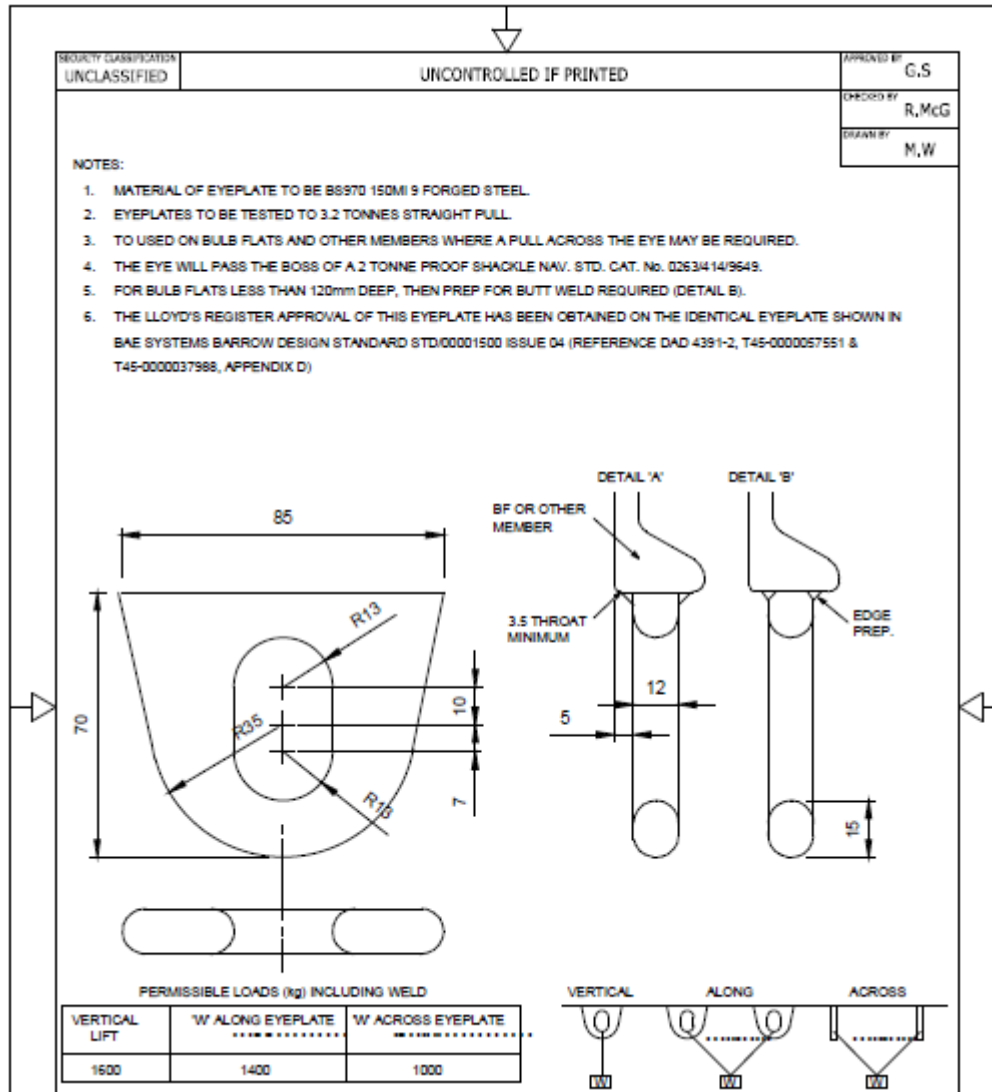
BAE SYSTEMS

- The achieved dimensions will be within +/- 1 mm of the desired dimensions.
- The outer surface of the forging is to be buffed smooth and free from any serrations. The inner surface is to have a smooth finish and be a good fit for the required shackle.
- The Eyeplates are to be manufactured in material to BS 970 150M19, forged steel suitable for welding into ship structure.
- The material must in addition satisfy the requirements of LR NSR and LR Rules for the Manufacture, Testing & Certification of Materials.
- The mechanical properties of the Eyeplates are to comply with BS 970 150M19.
- The Eyeplates are to be supplied without paint or primer.
- All finishing operations are to be complete before delivery to the shipyard to avoid work on the Eyeplates in the Platform Builder's Engine Shop.
- The supplier is not to exceed the budget weight given in table below.

System	Eyeplate	Allocation per eyeplate
Weight	YSL-01	0.34 kg
Weight	YSL-02	0.66 kg
Weight	YSL-03	2.25 kg
Weight	YSL-04	1.10 kg

2. ANNEX A

YSL-01 / DSD 122





YSL-02 / DSD 123

SECURITY CLASSIFICATION UNCLASSIFIED	UNCONTROLLED IF PRINTED	APPROVED BY G.S
		CHECKED BY R,McG
		DRAWN BY M,W

NOTES:

1. MATERIAL OF EYEPLATE TO BE B9870 150MI 9 FORGED STEEL.
2. EYEPLATES TO BE TESTED TO 3.2 TONNES STRAIGHT PULL.
3. TO USED ON FLAT BAR MEMBERS (ALSO FOR DSD/127 WHEN APPLICABLE).
4. THE EYE WILL PASS THE BOSS OF A 2 TONNE PROOF SHACKLE NAV. STD. CAT. No. 0263/414/9649. THIS ENABLES A PULL ACROSS THE EYE WITHOUT THE SHACKLE JAMMING.
5. WHEREVER POSSIBLE, WHEN ATTACHING EYEPLATE TO SECTIONS LESS THAN 120mm DEEP, DSD/123 SHOULD BE UTILISED DUE TO LIMITED WELD ACCESS.
6. THE LLOYD'S REGISTER APPROVAL OF THIS EYEPLATE HAS BEEN OBTAINED ON THE IDENTICAL EYEPLATE SHOWN IN BAE SYSTEMS BARROW DESIGN STANDARD STD/00001501 ISSUE 03 (REFERENCE DAD 4391-2, T45-0000057551 & T45-0000037988, APPENDIX D)

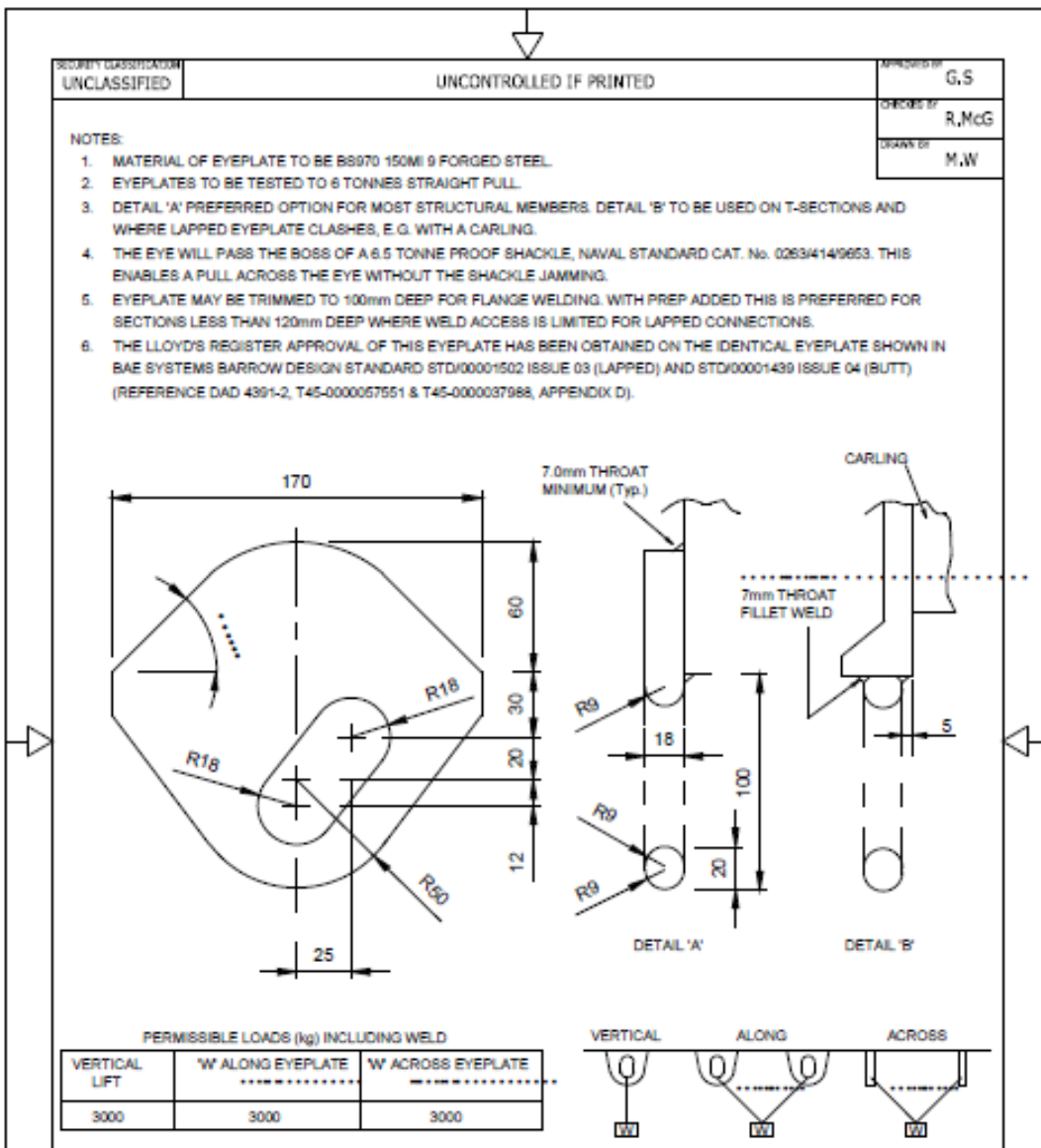
PERMISSIBLE LOADS (kg) INCLUDING WELD		
VERTICAL LIFT	W ALONG EYEPLATE	W ACROSS EYEPLATE
1600	1400	1000

VERTICAL

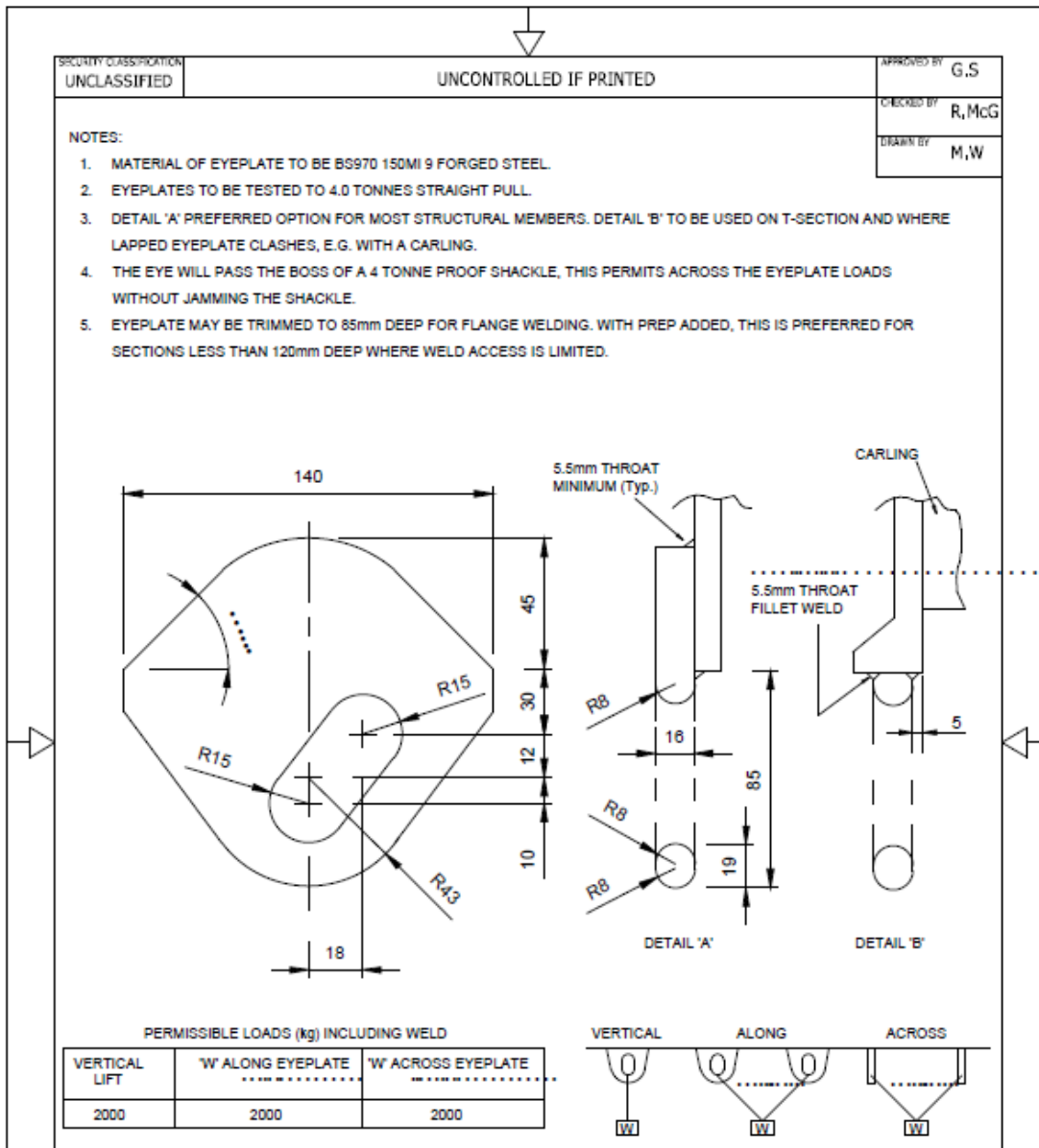
ALONG

ACROSS

YSL-03 / DSD 125



YSL-04 / DSD 203



3. PRE-QUALIFICATION QUESTIONNAIRE

1. *Provide full details of previous major defence, maritime or commercial projects in which your company has delivered wholeship eyeplates.*
2. *Do you have previous experience supplying wholeship eyeplates in Australia?*
3. *What State/s do you have these capabilities in?*
4. *Have you worked on defence contracts before?*
5. *Provide details of the company's management organisation structure.*
6. *Are you an Australian-owned company?*
7. *Are you an Indigenous company?*
8. *Please provide the number of Indigenous/Aboriginal/Torres Islander employees your organisation has? (Stipulate Full Time and Part Time)*
9. *Do you have a Reconciliation Action Plan (RAP) in place?*
10. *State acquired company certification and accreditations.*
11. *Stipulate any further competitive discriminators that have not been identified in the answers to previous questions*
12. *Have you updated your iICN company profile with the your trading name, contact details, website, ABN, number of employees, annual turnover, export details (if applicable) and ANZSIC codes? This information will be used in assessing this EOI.*

Closing date for Expression of interest:**21st June 2019 at 4.00PM**